



Since 1986



## Operating and maintenance manual for Mini Bubble King pumps

For all Mini Bubble King protein skimmer pumps 600, 1000, 1500

v12

**ENG**



## Operating and maintenance manual for Mini Bubble King pumps For all Mini Bubble King protein skimmer pumps 600, 1000, 1500

1. Maintenance	.....1
2. Disassembling <b>Mini Bubble King</b> pump	....2
2.1. Dismantling of the	
AKB(anti-lime-bypass)-hose	
of MBK pump 600	.....2
of MBK pump 1000 and 1500	.....2
3. Cleaning and decalcifying the wheel unit	.....3
3.1. Assembly of the rear bearing	.....3
4. Assembly of the skimmer	.....3
5. Defects and claims for compensation, disclaimer	.....5
6. Manufacturer's declaration	.....6
6.1. Manufacturer	
6.2. Informations and support	

### Important Notice

Please read this manual carefully before you install the device. We recommend not to proceed the installation of the device until you read the manual. This prevents any questions and problems that might occur in installation process. As soon as you power-on the skimmer pump for the first time, you agree that you read and understood this manual. In doubt or if anything is unclear please contact your supplier/vendor or dealer before you start-up the skimmer pump.

#### Please note:

1. Do not let the pump run dry - this would lead **to permanent damage!**
2. A **sufficient pre-filtering** of the water **before it enters the skimmer**, is recommended! So, the pump will be spared as before large parts, such as snail shells or shells, which can lead to a blockage of the needle wheel.

### 1. Maintenance

We recommend checking the Mini Bubble King at regular intervals to check for impurities on the needle wheel. This does not require removing the skimmer pump from the filter.

Disconnect the skimmer from the mains by unplugging the nozzle. Then turn the skimmer in your direction to see if any foreign objects such as snails, mussels, activated carbon pellets, filter cotton or food debris have entered the first row of needles. In case of an accumulation of debris in the pump, the pump must be disassembled.



All Mini Red Dragon Bubble King® pumps have a built-in automatic shut-off. The internal circuit is permanently measuring the power consumption of the pumps. In the case of serious calcifying, and thus, stiff bearings, the internal circuit will identify the rising power consumption as a failure and will switch off the pump for safety reasons.

This protects the Bubble King® pump from internal fires and other damages, such as short circuit resulting from overcharge. The pump can be brought back into operation by switching the plug on and off.

We do not advise repeatedly switching on and off to force the internal pump back into operation. If a Red Dragon pump switched itself off, there is a defect which needs to be resolved. Often, a clean is all that is required. Permanently tricking the circuit may result in severe motor damage, which is not covered by warranty.

## 2. Disassembling the pump

Pull the mains plug through the bottom plate. Put the pump onto a level surface and untighten the screw of the jet pan. The jet pan can now be disassembled. Only the jet tube is plugged in and should be removed. (only MBK 160)



The base plate is plugged into the pump outlet (160 model only). The 180 and 200 models have to be unscrewed from the base plate. Remove the base plate from the pump by slightly pivoting it. If necessary, the screws may be loosened and even removed. If this is the case, use a mid-sized screw driver and loosen the three screws.

Pull the housing cover to the front. Pull out the wheel unit from the front. If the wheel unit is extremely calcified, carefully insert a small screw driver into the gap between the motor block and housing cover, then lift slightly.



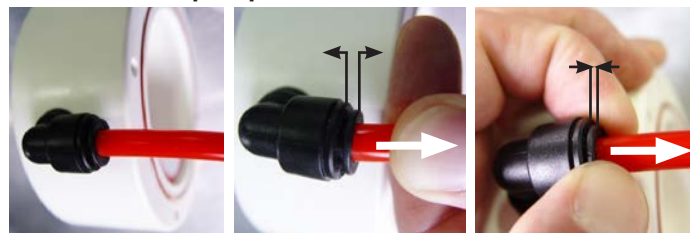
**Caution:** Never apply force to the wheel unit. The ceramic shaft is very sensitive and may break if bent. Replacement shafts are available.

### 2.1. Dismantling of the AKB(anti-lime-bypass)-hose of MBK pump 600

**Caution** by disassembling, don't proceed with violence, at first solve the hose from the pump head, then from the engine block.



### 2.1. ... of MBK pump 1000 and 1500



For more information, please visit [www.royal-exclusiv.de](http://www.royal-exclusiv.de). Simply enter the part number or name into the search box or email: [info@royal-exclusiv.de](mailto:info@royal-exclusiv.de).

All information subject to change. We try our best, but printing errors reserved.



### 3. Cleaning and decalcifying the wheel unit

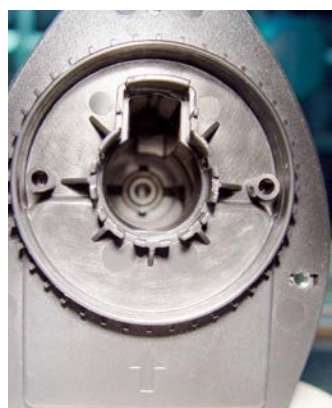
Decalcify the wheel unit using a suitable decalcifying bath.  
NEVER use hydrochloric acid even if diluted!!!

The pump could get seriously damaged. Applicable are formic acid, acetic acid and phosphoric acid or even household decalcifiers for water conditioners and coffee machines. Generally, the wheel bearing of the motor should be also decalcified. Thick, greasy residues should be removed under running water using a relatively hard brush. When using decalcifiers, please comply with the corresponding safety regulations on each packaging. Wear protective clothing and safety goggles.

**Important:**  
Special attention must be paid to the backside bearing of the wheel unit as most errors originate there.



If the bearing fits on the shaft when pulled out, as shown on the left picture above, then manually remove it from the shaft. The picture to the right shows the bearing once it has been removed from the shaft.



The bearing must **never** be placed loosely onto the shaft and the wheel unit then inserted into the motor block.

The bearing would not fit into its slide and the pump would therefore drone heavily during operation. The bearing must be securely installed into its slide before assembling the wheel unit.

#### 3.1. Assembly of the rear bearing

It is important to position the bearing correctly in its groove. The O-ring must be on top, as demonstrated in the figure. The runner should not be started if the O-ring is pointing

downwards. The whole wheel unit will be pushed forwards by approx. 2 mm. This touches the fan on the front of the cover, causing extreme noise. The bearings must not be mounted in this position.



O-Ring in correct position



O-Ring in wrong position



Once the bearing is placed on its slide, the O-ring seal must be securely attached to the groove using a mid-size screw driver.

The device can be reassembled once all the decalcified parts have been rinsed thoroughly.

### 4. Assembly of the skimmer-pump

After a complete clean, reassemble the skimmer according to the following instructions:

Start by checking that the bearing sleeve of the wheel unit on the back is placed correctly. Now take hold of the wheel unit and place it in such a way that the rectangular slide points upwards.

Before installing the wheel unit please assemble the O-ring seal. The left picture shows a correctly positioned O-ring. Please use silicon grease for the O-ring.





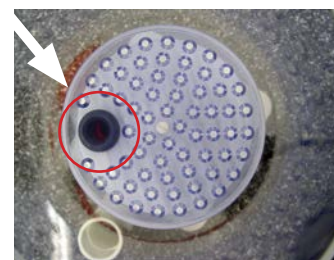
Since 1986



Now replace the pan-like shaped base plate, but do not mount until the motor block has been placed in the tube. Now put the mains plug through the base plate, insert the motor block into the tube and slightly tighten the titan screws.



The injection pan should be relatively centered in the middle of the tube. Please note: It is important to place the side with no holes on the pressure nozzle of the pump, rather than the side with holes.



The above picture shows a wheel unit and counterpart attached to the motor. This rectangular slide will only fit into the motor when pointing upwards. Insert the wheel unit and press its cover until you hear a click. First align the housing cover on the bottom and then press it in. Tighten the three screws until the gap between housing cover and motor block is closed. DO NOT over-tighten the screws. Mini Bubble King 180 & 200 differ only by the different pump head from MBK 160.

Next, pull the silicone tube through the tube, with one end attached to the nozzle and the other to the silencer. Finally, check the silencer.

The upper cover is only loosely stuck on and should be easy to remove. If this is not the case, insert a screw driver from the bottom side of the 10 mm air tube and gently hit the cover. The cover should then be easy to remove and the silencer becomes accessible.

Replace the cover after cleaning. Please do not insert cotton wool or activated carbon into the silencer. We explicitly point out that the pump cannot be operated in dry run. The pump may under no circumstances be operated on a dry run, even for testing purposes. Doing so may result in instant damage. The skimmer is now operational again.

Subsequently, reassemble the intake tube. **Caution:** The intake tube has a small grading at the end of the tube. This grading must be pressed into the housing cover of the motor until the tube meets the stop position of the housing.







## 5. Defects and claims for compensation, disclaimer

### 8. Defects and claims for compensation

**5.1.** Barring any further claims we are only liable that the supplied goods are free of defects until the initial transfer of perils. Insignificant variations of the contracted appearance and workmanship or marginal limitation of the usability or suitability of the product are unremarkable.

The warranted condition, endurance and usability the product is solely subject to the specification agreed in writing, in the product specification and / or in this manual. Further oral agreements, especially from preliminary talks, advertising and / or in related industrial standards will be only valid as integral part of a written contract. Only conditions and specifications assured specifically by us are valid. We do not accept conditions or specifications made by third parties. Specifically the specification assured in this manual are valid.

If the customer wants to use the product for other than the intended purpose, he is obliged to thoroughly check the suitability of the product for the other purposes. We give no warranty and no liability accrues for any applications that are not agreed on by us explicitly and in written form.

Any manipulation of the pump, the (needle wheel) impeller or the electronic as well as any attempt to modify the software, to influence the software or to read out or re-engineer the software of the driver unit immediately causes a loss of warranty and all claims and rights expire.

Every user is held responsible for the appropriate usage of his **Mini Bubble King** skimmer pump. The user manual does not discharge you from your liability for a safe, appropriate and secure application, installation, operation and maintenance.

By using this manual you agree that in no circumstances the manufacturer can or will be held liable for any personal injuries or property damages which possibly occur due to the usage of the device. This applies specifically for any damages that are due to inappropriate piping or plumbing. Insufficient or missing cleaning- or maintenance intervals and damages that might result due to these are not covered by warranty. This applies especially for calcinations (salt water usage) and accumulated foreign particles (pond usage) such as sand or gravel, which lead to damages on rotors, bearings, rotor housing or motor housing, that are not covered by warranty.

**5.2.** Our warranty for defects is strictly limited to supplementary performance. This is upon our choice either removal of defects or replacement delivery free from defects. In the case of challenge, impossibility or failure of the supplementary performance the customer has the right for impairment or the right to withdraw from the contract.

Additional expenses which arise because the customer has brought the sales item to another place than his subsidiary. The manufacturer explicitly limits the warranty to the pump itself. We are not liable for consequential damages, or damages that are caused by a malfunction or failure of the skimmer pump, such as a loss of animals. It is in the responsibility of the customer to provide back-up devices for the case of a potential malfunction or failure of the pump.

**5.3.** The customer has to check the goods immediately thoroughly, also for product safety. Apparent damages have to be reported in written form immediately. Hidden damages have to be reported immediately after their discovery. The customer is liable to report transport damages within 24 hours to the carrier and/or the delivery service. Disregarding the rules for checking and reporting results in a loss of warranty.

**5.4.** Furthermore we are not liable for the consequences of inappropriate application, usage, maintenance and handling of the product by the customer or his subsidiaries, neither for normal abrasion. This applies specifically to the consequences of thermal, chemical, electrochemical or electrical influences as well as for infringements against our uses- and maintenance manuals. The same applies to damages which are the result of changes or adjustments by the customer which have not been approved by us in beforehand.

**5.5.** Our liability for wanton negligence is limited to claims of injury of life, body and health, to claims based upon the law on product liability and to claims from culpable fundamental breach of the contract which peril contractual obligations. For the rest our liabilities for wantonly negligent breach of contractual obligations, which are foreseeable at the time of the conclusion of the contract, are barred.

Damages, which are unambiguously attributed to inappropriate usage of the product, are in general to be accounted for by the customer. In the case of returns of the product the customer has to use break-proof packaging for the product. The customer is liable for any damages that can be accounted to an inappropriate packaging.



**5.6.** Claims against us become time-barred within a year after the initial delivery of the goods to the customer. The same applies to claims for damages regardless of their juridical cause. The limitation period does not apply to claims based upon the malicious concealment of damages from the injury of life, health or body and for other damages that result out of intention or wanton negligence.

**5.7.** If it becomes apparent during our examination of damages reported by the customer or in the course of our removal of defects, that the reported damages or claims were made wantonly negligent or unwarranted, we may charge an adequate consideration for our examination and for the removal of defects. The customer has the right to neglect a necessary repairing and to demand the return of the skimmer pump. In general every examination of damages is bound to lump-sum compensation if it occurs that the customer has to be accounted for the damages.

#### **5.8. Spare parts**

Our liability to deliver and hold spare parts available is limited to the period of 5 years after initial shipment of the product. Our respective list prices apply for spare parts.

#### **5.9. Disposal**

We offer our customers to take back products that fall under the restriction of hazardous substances directive (ElektroG) within Germany free of charge, for products, which were brought into circulation after the 13th of August 2005. We will take care for the disposal. If a customer chooses not to let us take care for the disposal, he takes the responsibility of a disposal according to legal regulations and discharges us from our liabilities according to §10 sect. 2 ElektroG and any associated liabilities of others.

#### **5.10. Subject to alterations**

The manufacture has the right for changes in hardware and software of the product at any time without preliminary notice, as long as these changes advance reliability or quality of the skimmer pump. No claims can be made if for instance design, functionality or performance of the skimmer pump changes elementary. The assured specification of the skimmer pump is always guaranteed.

## **6. Manufacturer's declaration**

Titles against **Royal Exclusiv®** concerning the products described in this manual address on the **Royal Exclusiv®** guarantee clauses. Specification may vary due technical improvements.

### **6.1. Manufacturer**

#### **Royal Exclusiv® pumps and skimmers**

Richard-Byrd-Str. 7 // 50829 Cologne // Germany

Fon +49(0)221/222886 0 // Fax +49(0)221/22288622

info@royal-exclusiv.de // www.royal-exclusiv.de

### **Made in Germany**

Royal-Exclusiv® EAR-number: WEE.Reg.Nr. 83082352

### **6.2. Informations and support**

Thank your for purchasing a **Royal Exclusiv®** Mini Bubble King protein skimmer pump. This protein skimmer pump is a high quality product made in Germany with the highest manufacturing demands on modern CNC machines. This manual is supposed to help you to setup the protein skimmer pump for use and to advice you with the necessarily maintenance procedures.

To ensure longlasting satisfaction with this product we please you to read this manual carefully and follow our guidelines.

**Royal Exclusiv®** guarantees 5 years of spare part availability for the Mini Bubble King protein skimmer pump.

Should the device in some way not meet the high demands you expect from **Royal Exclusiv®** please contact the dealer where you purchases your Mini Bubble King protein skimmer pump. This is usually the best way for product support. However you may feel free to contact our support on our website: <http://www.royal-exclusiv.de>